

# LARGE LANGUAGE MODELS ACROSS INDUSTRIES

NOV/  
2023

**All industries:**  
LLMs can now  
automate '60-70% of  
employees' time'  
[McKinsey]



**Agriculture:**  
Decrease operating  
costs by 22%  
[ARK]

**Consulting:** 25.1%  
faster, 40% higher  
quality  
[Harvard/BCG]



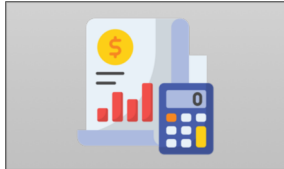
**Healthcare:**  
58.7% better  
interpersonal skills  
[Nature]



**Software  
development:**  
55.8% faster  
[Microsoft/MIT]



**Medicine:**  
Charts 75% faster,  
250% more detail  
[Carbon Health]



**Finance, accounting,  
auditing:** 'Fully  
exposed,' 100% faster  
[OpenAI/UPenn]

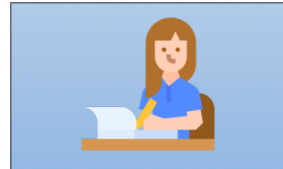


**Therapy/coaching:**  
AI promises 'more  
effective' therapy  
[Seligman]

**Chemistry:**  
'GPT-4 represents the  
future of chemistry'  
[White]



**Customer service:**  
14% more issues  
resolved  
[McKinsey]



**Writers:** 'Fully  
exposed,' 100%  
faster  
[OpenAI/UPenn]

Sources:  
All industries = Customer services; McKinsey  
Agriculture = McKinsey  
Medicine = Carbon Health; <https://carbonhealth.com/blog/ai-in-healthcare>; <https://www.nature.com/articles/s41598-023-45845-9>  
Healthcare = Nature; <https://www.nature.com/articles/s41598-023-45845-9>  
Chemistry = Nature (PDF); <https://www.nature.com/articles/s41598-023-45845-9.pdf>  
Management consulting = Harvard/BCG; [https://papers.ssrn.com/sol3/papers.cfm?abstract\\_id=5783824](https://papers.ssrn.com/sol3/papers.cfm?abstract_id=5783824)  
Energy = Seligman; <https://www.seligman.com/insights/ai-in-energy>  
Software = Microsoft; <https://www.microsoft.com/en-us/ai>  
Writers = OpenAI/UPenn; <https://arxiv.org/abs/2308.10130>

Alan D. Thompson, November 2023; <https://lifearchitected.ai/use-cases/>

